



ZODIAC INTERNATIONAL

DIVISION MARINE

Zodiac Modular Inflatable Boats (MIBs)

Rev 0 – 18 Jan 07
TECHNICAL DATA SHEET



Jockey seat with a mounted steering pod



Padeyes



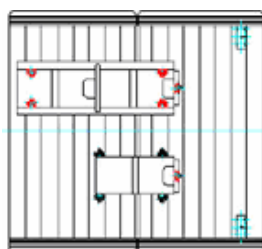
Draw Latch

Modular inflatable Boats (MIB's) are flexible bottom boats, based on Futura™ hulls from 4.70m to 7.00m and fitted with jockey seats and consoles. They offer as much as a RIB can offer, with the added value of being easily disassembled, packed and transported.

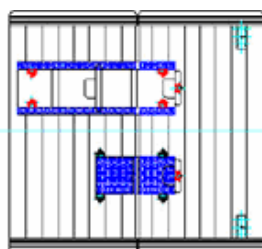
The Zodiac patented system allows to fit jockey seats and steering consoles on inflatable boats and to remove them in a snap without any tools. The transom can be equipped with a quick release shoe so the engine can be removed without any tools as well.

Initially you will need tools to assemble the padeyes & draw latches to the floorboards, after which, the seats & steering console are fastened entirely manually to their padeyes & secured by adjustable draw latches.

This system can only be installed on a hard floorboard or deck & uses foam pads to avoid metal-metal friction. This allows accessories to be mounted between two floorboards. It also prevents vibrations.



Jockey seat 2P & Jockey seat 1P
Placed over a floorboard junction



Corresponding with the floorboard area
between the seats & the floorboard, trace
the foam location on the floorboard



Foam secured to the floorboard



There are different configurations depending one boat type. MIBs are specially designed for professional & military crafts that are subjected to intensive marine use.

THIS MATERIAL CONTAINS PROPRIETARY DATA BELONGING TO ZODIAC INTERNATIONAL. UNAUTHORIZED DISCLOSURE, USE OR REPRODUCTION WILL RESULT IN LIABILITY. ZODIAC RESERVES THE RIGHT TO CHANGE THE SPECIFICATIONS OF THIS TECHNICAL DATA SHEET WITHOUT NOTICE.

Dimensions and weight + or - 3 % (5% on prototype)



ZODIAC INTERNATIONAL

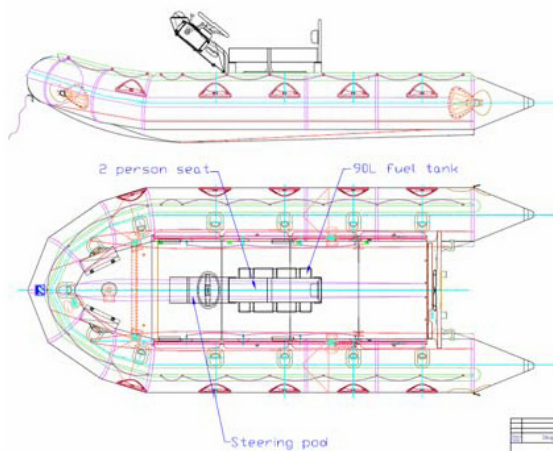
DIVISION MARINE

Standard configurations

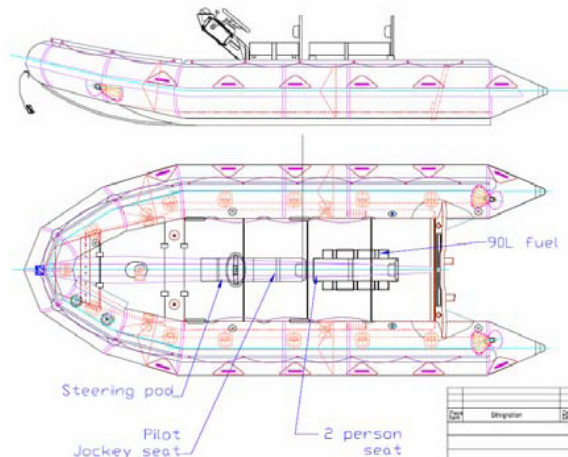
MIB 470 minimum configuration	
- FC 470 w/ rigid floor	Z80223 or Z80227
- Single jockey seat, black	Z1922B
- Steering pod	Z66028
- Mounting plate for steering pod	Z65062
- Ribpack hardware, 4 points, for 1 seat	Z66043
- Steering cable 14 feet	Z61126
- Templates	Z66044
- Engine quick release shoe	Z65105
Options	
- Fuel tank, 90 l rotomolded	Z65128
- Single jockey seat can be replaced by 2 person jockey seat, frame type	Z66042

MIB 530 minimum configuration	
- MK 4 HD or FC 530 w/ rigid floor	Z80140 or Z80228
- Single jockey seat, black	Z1922B
- Steering pod	Z66028
- Mounting plate for steering pod	Z65062
- Ribpack hardware, 4 points, for 1 seat	Z66043
- Steering cable 15 feet	Z61069
- Template	Z66045
- Engine quick release shoe	Z65105
Options	
- Fuel tank, 90 l rotomolded	Z65128
- Additional 2 persons jockey seat, frame type and RibPack hardware	Z66042 and Z66043

MIB 470



MIB 530



THIS MATERIAL CONTAINS PROPRIETARY DATA BELONGING TO ZODIAC INTERNATIONAL. UNAUTHORIZED DISCLOSURE, USE OR REPRODUCTION WILL RESULT IN LIABILITY. ZODIAC RESERVES THE RIGHT TO CHANGE THE SPECIFICATIONS OF THIS TECHNICAL DATA SHEET WITHOUT NOTICE.

Dimensions and weight + or - 3 % (5% on prototype)



ZODIAC INTERNATIONAL

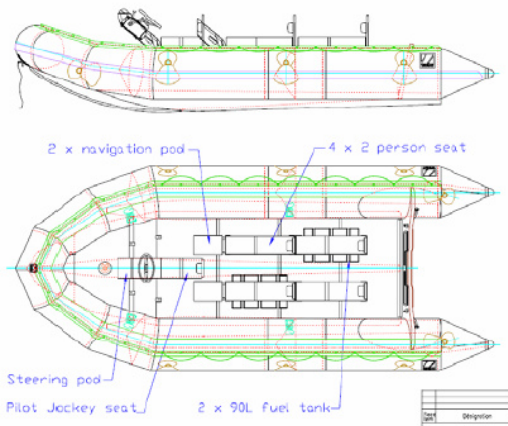
DIVISION MARINE

Standard configurations

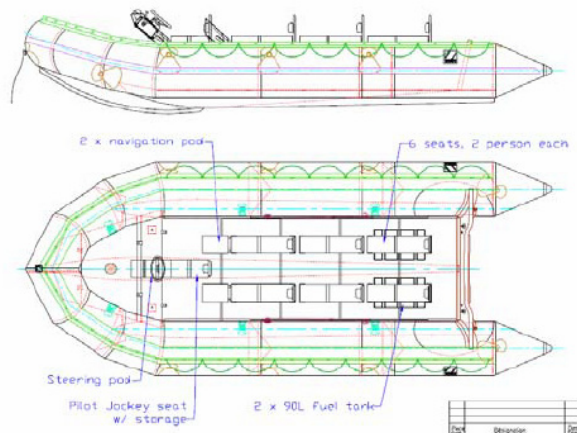
MIB 580 minimum configuration	
- MK 5 HD or F580	Z80141 or Z80135
- Single jockey seat, black	Z1922B
- Steering pod	Z66028
- Mounting plate for steering pod	Z65062
- Ribpack hardware, 4 points, for 1 seat	Z66043
- Steering cable 18 feet	Z65161
- Template	Z66046
- Engine quick release shoe	Z65105
Options	
- Fuel tank, 90 l rotomolded	Z65128
- Additional 2 persons jockey seat, frame type and RibPack hardware (up to 4)	Z66042 and Z66043
- Navigation pod and mounting plate (up to 2)	Z66048 and Z65062

MIB 700 minimum configuration	
- MK 6 HD	Z80142
- Single jockey seat, black	Z1922B
- Steering pod	Z66028
- Mounting plate for steering pod	Z65062
- Ribpack hardware, 4 points, for 1 seat	Z66043
- Steering cable 22 feet	Z65162
- Template	Z66046
- Engine quick release shoe	Z65105
Options	
- Fuel tank, 90 l rotomolded	Z65128
- Additional 2 persons jockey seat, frame type and RibPack hardware (up to 6)	Z66042 and Z66043
- Navigation pod and mounting plate (up to 2)	Z66048 and Z65062

MIB 580



MIB 700



THIS MATERIAL CONTAINS PROPRIETARY DATA BELONGING TO ZODIAC INTERNATIONAL. UNAUTHORIZED DISCLOSURE, USE OR REPRODUCTION WILL RESULT IN LIABILITY. ZODIAC RESERVES THE RIGHT TO CHANGE THE SPECIFICATIONS OF THIS TECHNICAL DATA SHEET WITHOUT NOTICE.

Dimensions and weight + or - 3 % (5% on prototype)